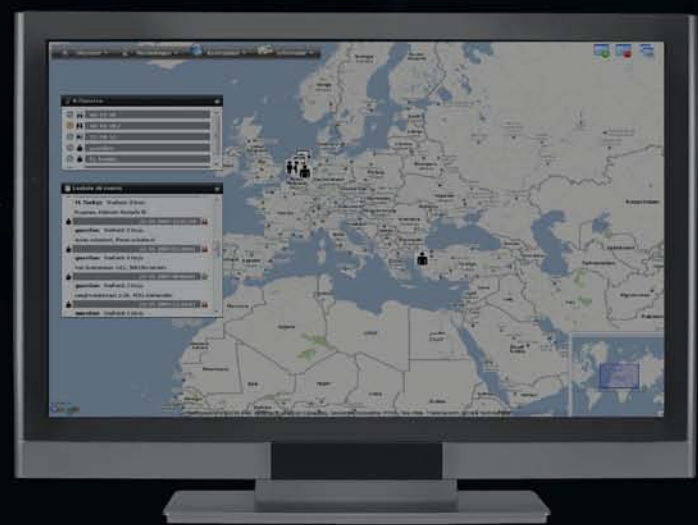


# GPS MONITOR



ONLINE EDITION MANUAL



VEHICLE MANAGEMENT | PEOPLE MANAGEMENT | FLEET MANAGEMENT

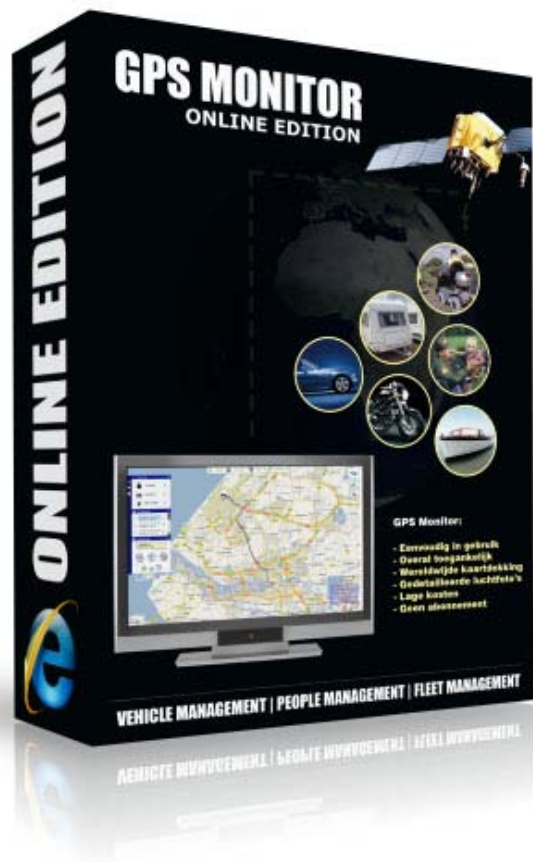


# Index

|                              |    |
|------------------------------|----|
| About GPS Monitor.....       | 2  |
| Application login.....       | 3  |
| Assets .....                 | 4  |
| Actions .....                | 5  |
| Actions - Get location ..... | 6  |
| Actions - Follow mode.....   | 7  |
| Actions - Parking mode ..... | 8  |
| Load route .....             | 9  |
| Request report.....          | 10 |
| Geozone .....                | 11 |
| Geozone activated.....       | 12 |
| Map display .....            | 13 |
| Settings.....                | 14 |
| Events .....                 | 15 |
| Credits .....                | 16 |
| GPS Trackers.....            | 17 |
| Contact .....                | 18 |



# About GPS Monitor



Total control? A ultimate sensation of security? A unique car or motorcycle alarm, monitoring your children or perhaps you use GPS Monitor to control the whereabouts of other valuables.

## GPS Monitor for your business:

- When you would like to know the whereabouts of your company vehicles and employees
- When you want to know which employee is closest to your next client
- When the activities of your organization include rental, transport or delivery of valuable goods

## GPS Monitor for private use:

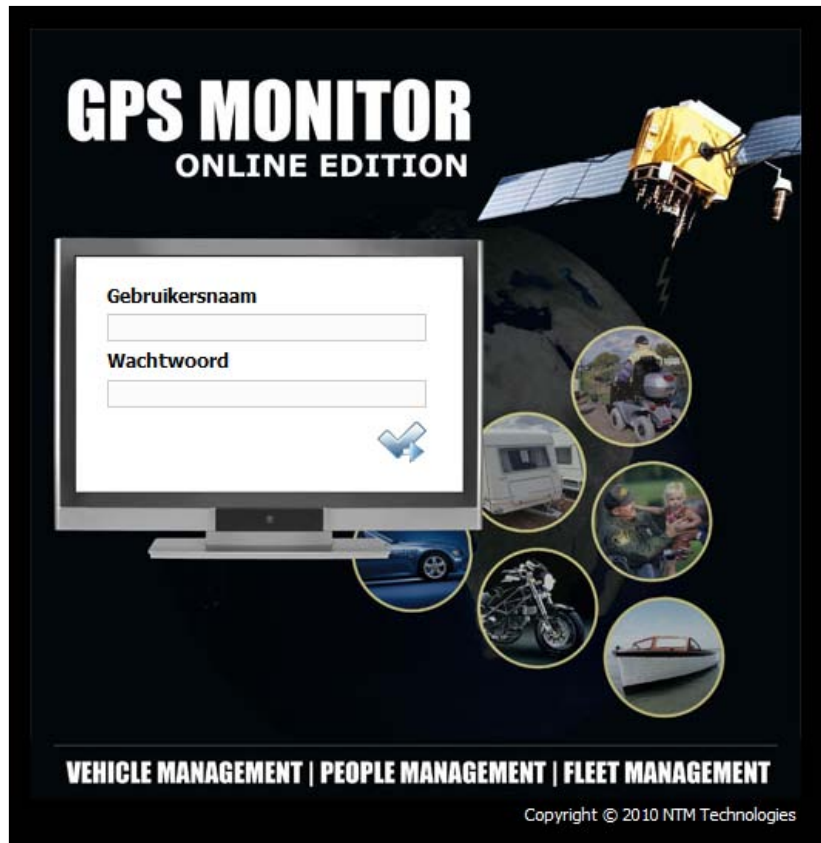
- Use GPS Monitor for protecting your beloved ones
- Protect your valuable assets against theft or loss

The possibilities of GPS Monitor are endless. In case of calamities GPS Monitor makes it possible to act rapidly and adequate..

Are you looking for an affordable and complete solution, without additional cost afterwards? Then you do not need to look further!




# Application login



## GPS Monitor Online Edition

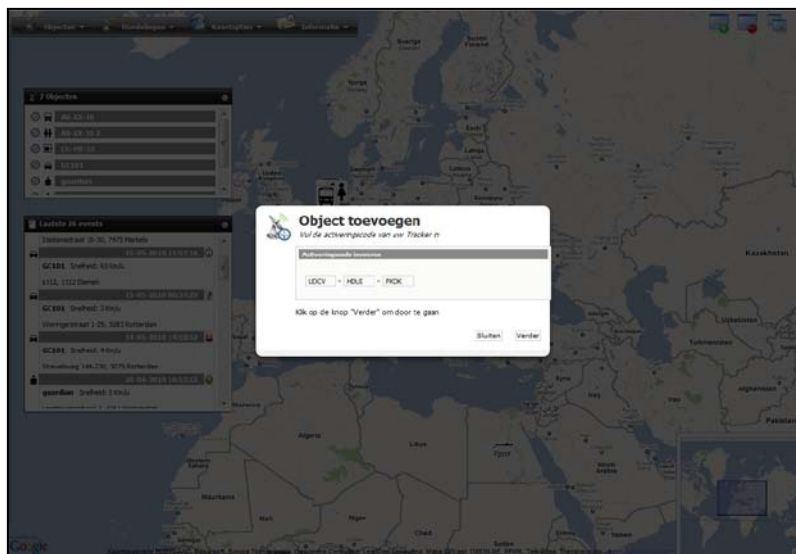
Start the GPS Monitor application by using the provided web address.

Enter your credentials and click on 

Your objects and settings will be loaded automatically after GPS Monitor has been started.

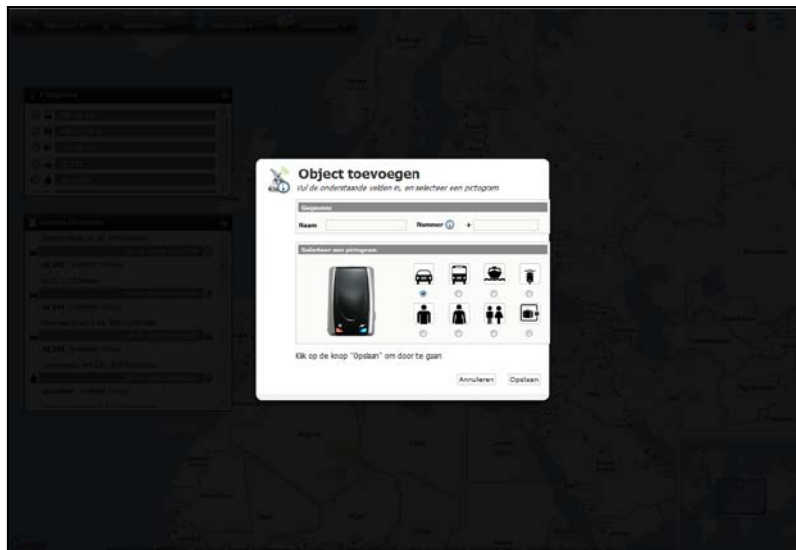


# Assets



## Add your GPS Tracker

- 1) In GPS Monitor go to menu option:  
**Assets > Add asset**
  - 2) Enter the activation code of your Tracker
- Click on **Continue** to validate your code.



## Customize your GPS Tracker

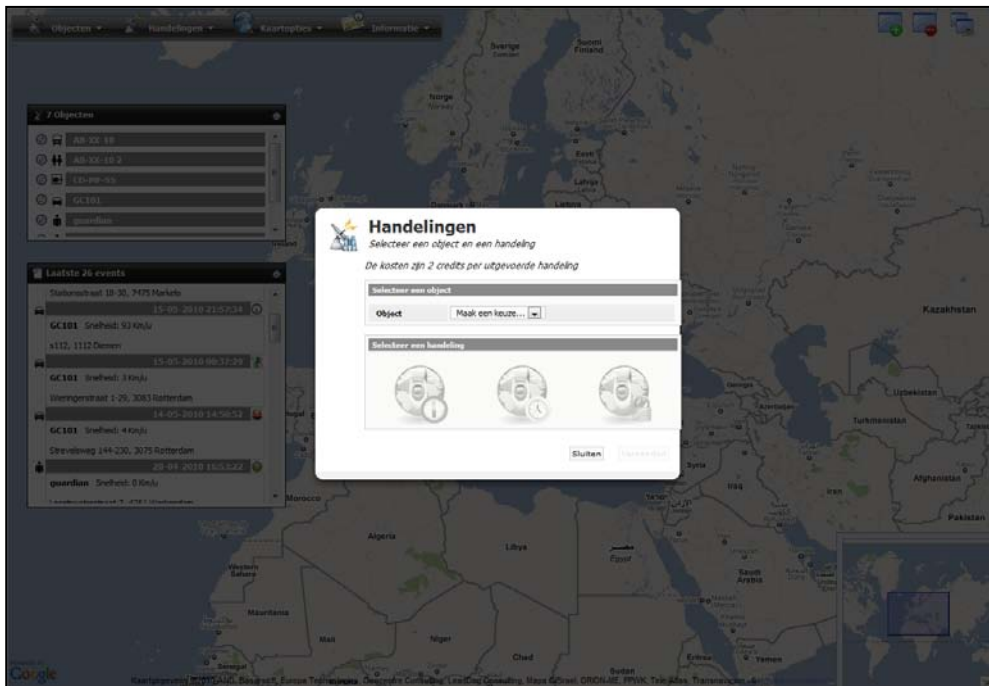
Enter a name, phone number and select a icon for your asset.

Enter the complete phone number of the SIM card inside your tracker, including coutry code. Example: 31646123456

Click on **Save** to save your asset.



# Actions



## Get location

Request the location of your Tracker once.



## Activate follow mode

Set a Frequency.

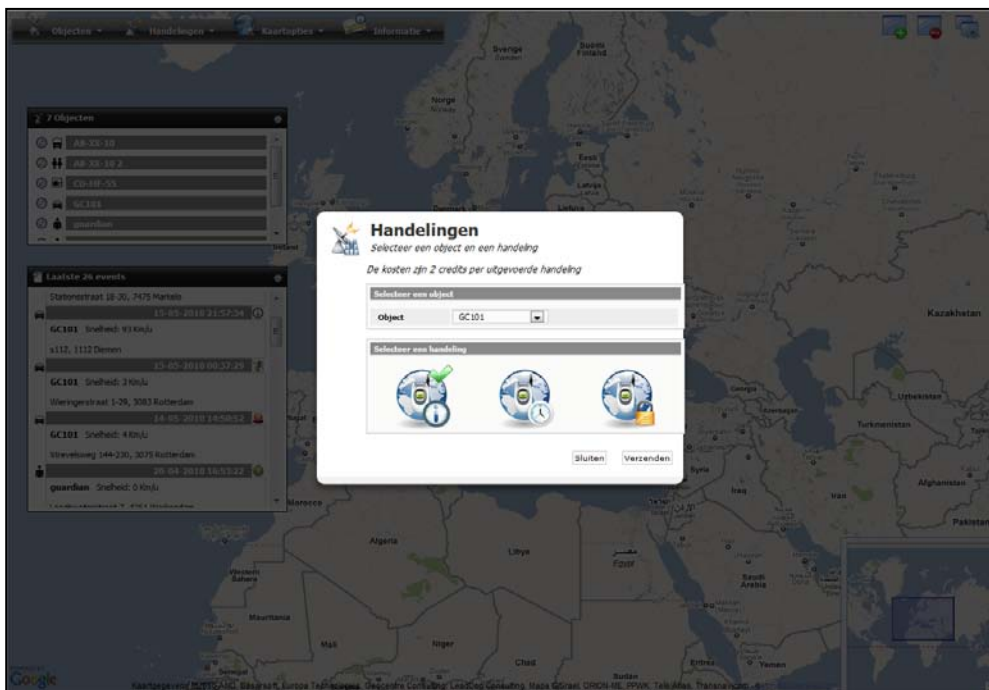


## Activate parking mode

Your tracker will turn on a 1 hour follow mode when in motion.



# Actions - Get location



## Get location

Request the location of your Tracker once.

## Cost

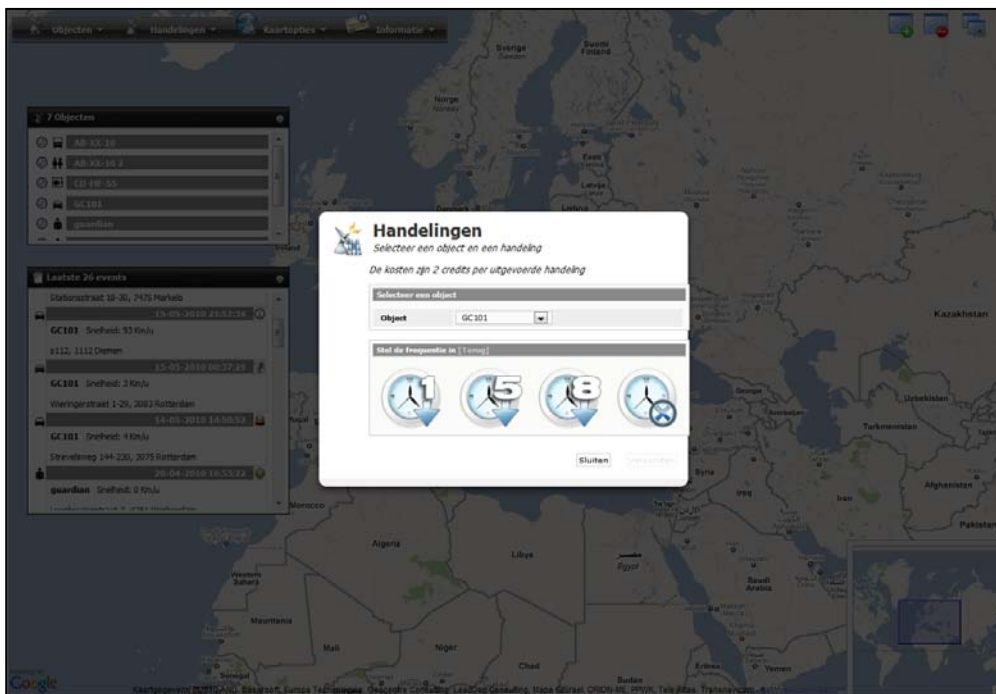
2 credits for performing the action.

## Frequency

Receive a single location.



# Actions - Follow mode



**Follow 1 hour**



**Follow 5 hours**



**Follow 8 hours**



**Deactivate follow mode**

## Cost

2 credits for performing the action.

## Frequency

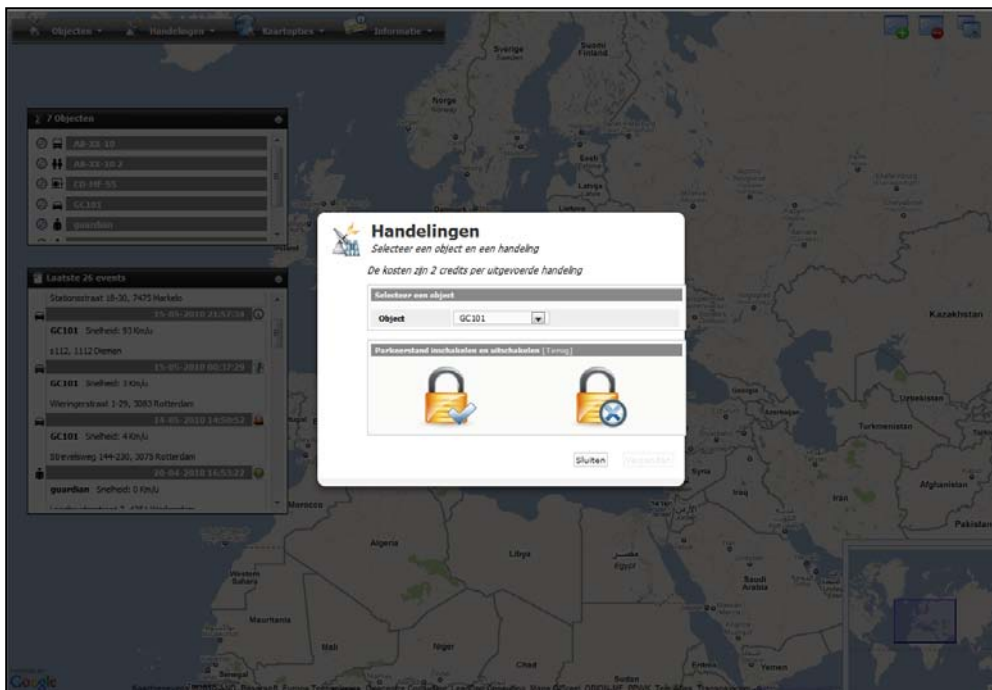
1 hour : Receive a location every 20 seconds.

5 hours : Receive a location every 2 minutes.

8 hours : Receive a location every 3 minutes.



## Actions - Parking mode



Parking mode ON



Parking mode OFF

### Cost

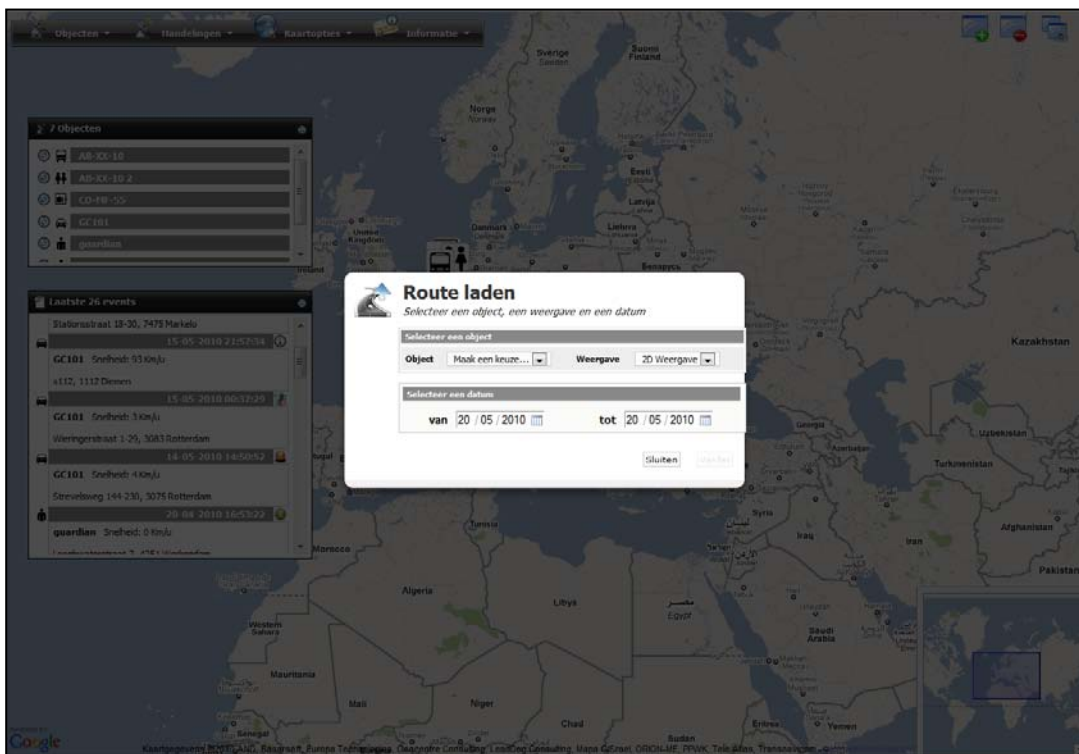
2 credits for performing the action.

### Frequency

When in motion : Receive a location every 20 seconds, for 1 hour.



# Load route



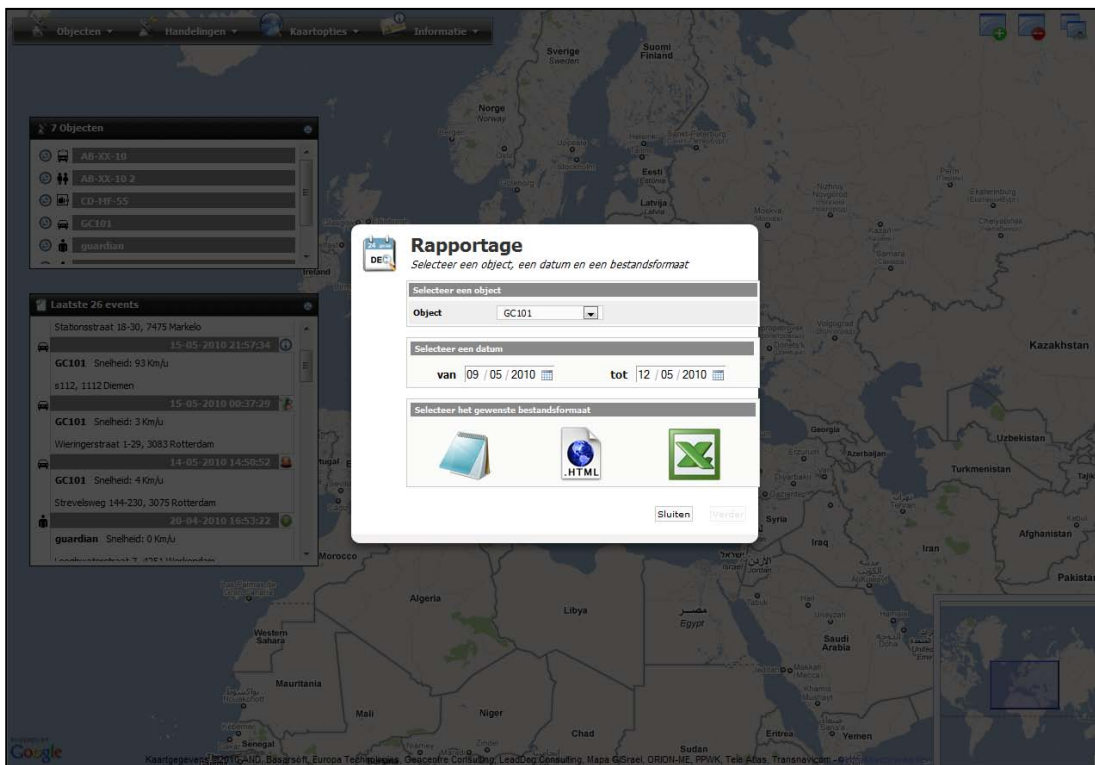
## Load route

Select your object and desired date span.

You can view the track in a 2D or 3D map perspective.



# Request report



## Text file

Save information as  
Text file (.txt)



## HTML file

Save information as  
HTML file (.html)



## Microsoft Excel file

Save information as  
Excel file (.xls)

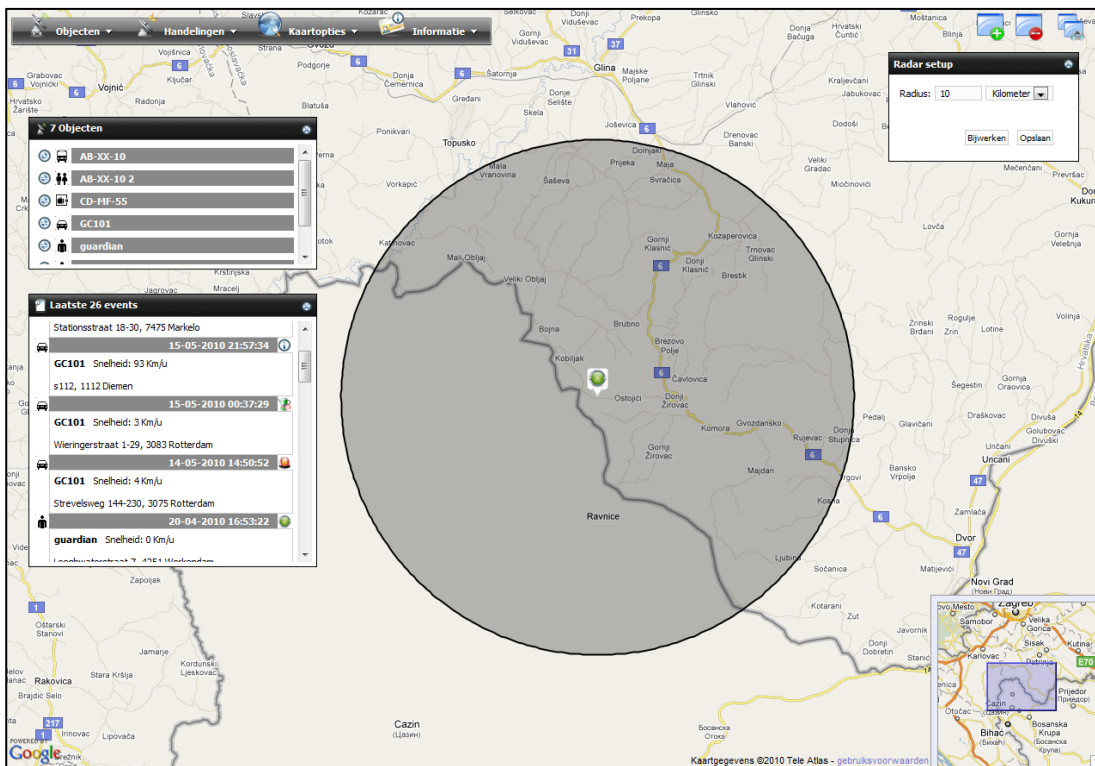
## Request report

Select your object and desired date span.

You can save the report as a text, HTML or Excel file.



# Geozone



## Radar setup

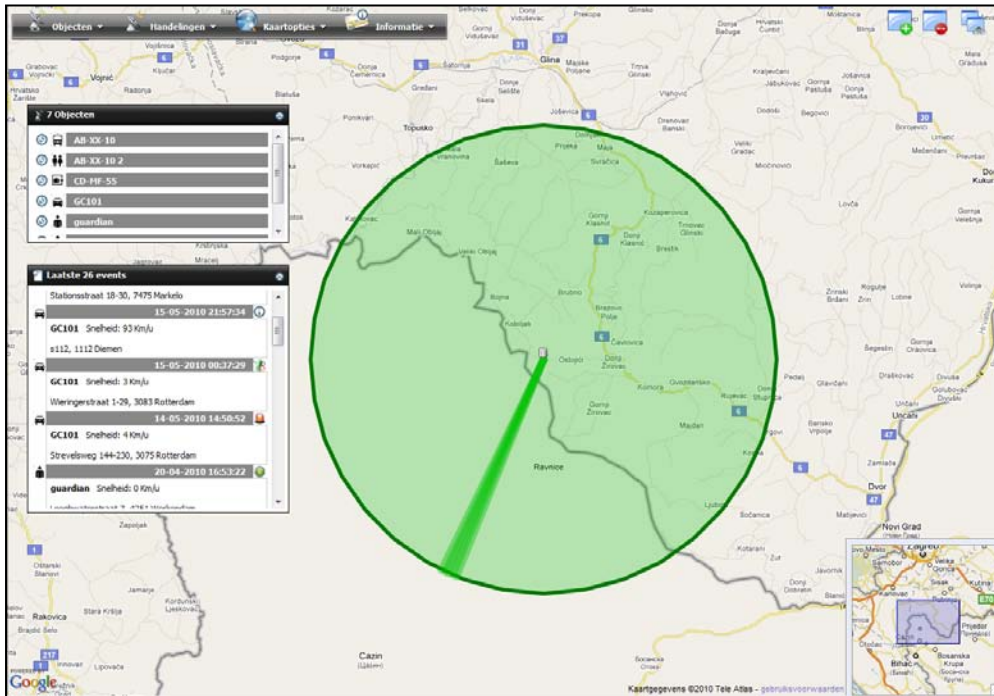
You can set the radius in kilometres and meters here.

## Geozone Setup

- 1) Drag the icon on the map to a location of your choice.
- 2) Set the circle radius and click on save to activate the geozone.



# Geozone activated



## Geozone activated

When a object is moving inside or outside the circle\* you will automatically receive a SMS emergency notification on your mobile phone.

\* (see **Settings > Radar notification**)

## Cost

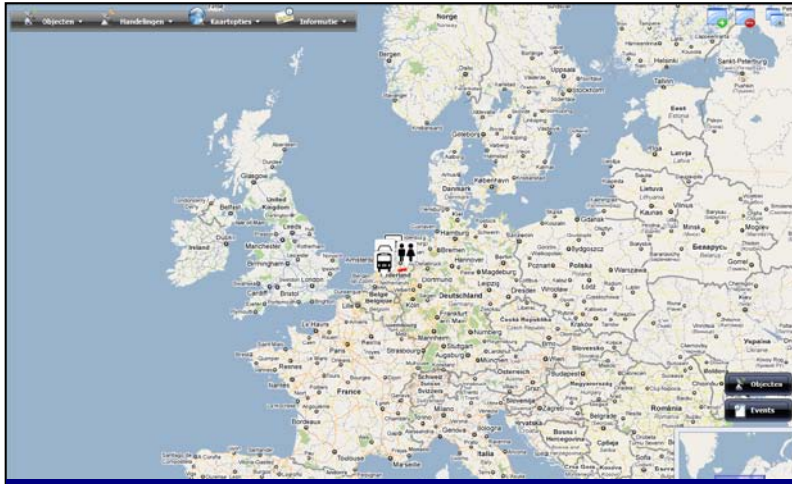
2 credits per forwarded message.

## Frequency

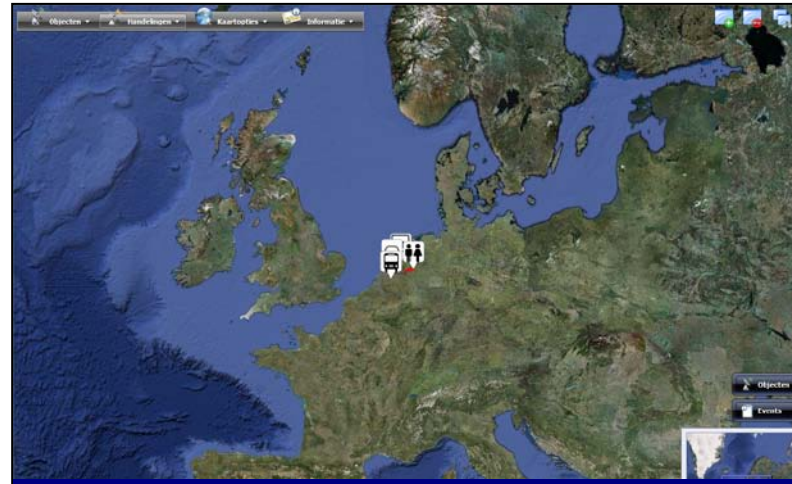
Depends on your settings (see **Settings > Radar notification**).



# Map display



Street map



Satellite map



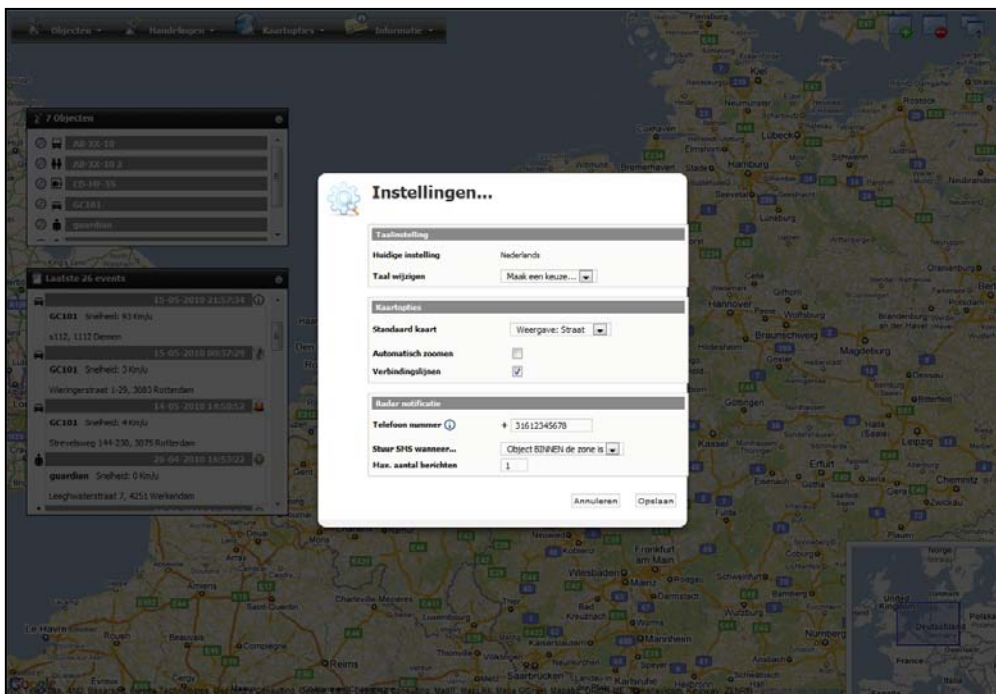
Topographic map



Streetview



# Settings



## Language setting

You can set the language of GPS Monitor here.

## Map options

Set the default map at start-up.

You can choose to automatically zoom to a new location, and to display track lines on the map.

## Radar notification

The number you use here will be used to receive geozone notifications.

Choose the default setting that will be used for the geozone function.

Set the maximum amount of messages that you wish to receive from the geozone function.



## Events

When GPS Monitor receives a new location from your Tracker it is displayed in one of the following event types.



### Location received

You are receiving this type of event after performing the **Get location** action.



### Automatically received

You are receiving this type of event after performing the **Activate follow mode** action.



### Asset on the move

You are receiving this type of event after performing the **Activate parking mode** action.



### SOS emergency

You are receiving this type of event after pressing the SOS button on the Tracker.



### Asset inside/outside safetyzone

You are receiving this type of event when the Tracker is inside or outside the safetyzone.



### Power Low

You are receiving this type of event when the battery of the Tracker runs out of power.



# Credits

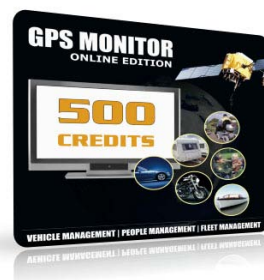
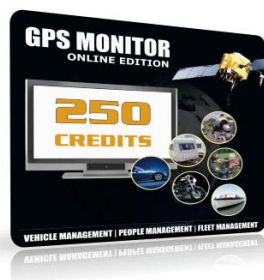
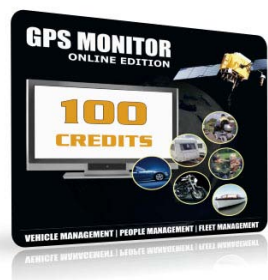
You will need credits to perform actions in GPS Monitor Online Edition.

Credits can be ordered quick and easy at the NTM Technologies Online Store.

After payment of your order, the credits are automatically loaded to your account so you can get started right away.

## Creditpacks

You can purchase credits in 4 bundles: 100, 250, 500 en 1000 credits.





# GPS Trackers

**TRACKSTAR 3**



**TRACKSTAR 4**



**TRACKSTAR 5**



**GUARDIAN**



**MICRO TRACKER**



**ASSET TRACKER**



**FLEET TRACKER**



**ENDURO**





## Contact

### **NTM Technologies**

Leeghwaterstraat 6a  
4251 LM Werkendam  
The Netherlands

Tel : +31 (0)183678524  
Fax : +31 (0)183678029

### **Web**

[www.ntm-tech.com](http://www.ntm-tech.com)

### **Online Store**

[www.ntm-tech.com/store](http://www.ntm-tech.com/store)

### **General**

[info@ntm-tech.com](mailto:info@ntm-tech.com)

### **Sales**

[sales@ntm-tech.com](mailto:sales@ntm-tech.com)

### **Support**

[support@ntm-tech.com](mailto:support@ntm-tech.com)

### **Corporate**

[enterprise@ntm-tech.com](mailto:enterprise@ntm-tech.com)

### **GPS Monitor**

Web: [www.gps-monitor.eu](http://www.gps-monitor.eu)

### **General**

[info@gps-monitor.eu](mailto:info@gps-monitor.eu)



**NTM TECHNOLOGIES**  
**BRINGING CONTROL TO YOUR WORLD**